

Cubicle Specification Range - Industria Plus Cubicles

Manufacturer

Inscape Interiors Limited
Unit 1, Lower Healey Business Park
Froom Street, Chorley
PR6 9AR
Tel: 01257 249090
Email: info@inscapepeople.co.uk

" Frame:

- Type: Manufacturer's standard.
- Height: 1950mm - 2700
- Material/ finish:
Head rail: Aluminium Angle in Satin Anodised Aluminium.
Pedestal leg: Satin Anodised Aluminium Leg, fixed through cubicle division.

" Dividing Panels:

- Height: 1950mm - 2700
- Floor clearance: 10mm - 150mm
- Core material: Moisture resistant MDF
Thickness: 18mm
- Facings: Decorative High Pressure Laminate (HPL) face and balancer to reverse.
Colour/ Pattern/ Species: TBC from Inscape offered colour brochure.
- Edge treatment: Matching PVC Square Edged.

" Pilasters:

- Height: 1950mm - 2700
- Core material: Moisture resistant MDF.
Thickness: 18mm
- Facings: Decorative High Pressure Laminate (HPL) face and balancer to reverse.
Colour/ Pattern/ Species: TBC from Inscape offered colour brochure.
- Edge treatment: Matching PVC Square Edged.

" Doors:

- Height: 1950mm - 2700
- Core material: Moisture resistant MDF.
Thickness: 18mm
- Facings: Decorative High Pressure Laminate (HPL) face and balancer to reverse.
Colour/ Pattern/ Species: TBC from Inscape offered colour brochure.
- Edge treatment: Matching PVC Square Edged.

" Ironmongery:

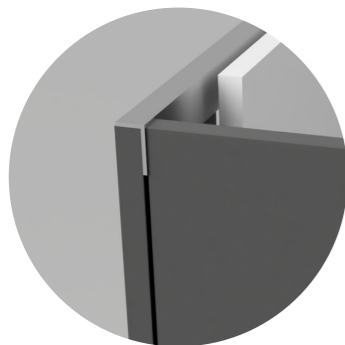
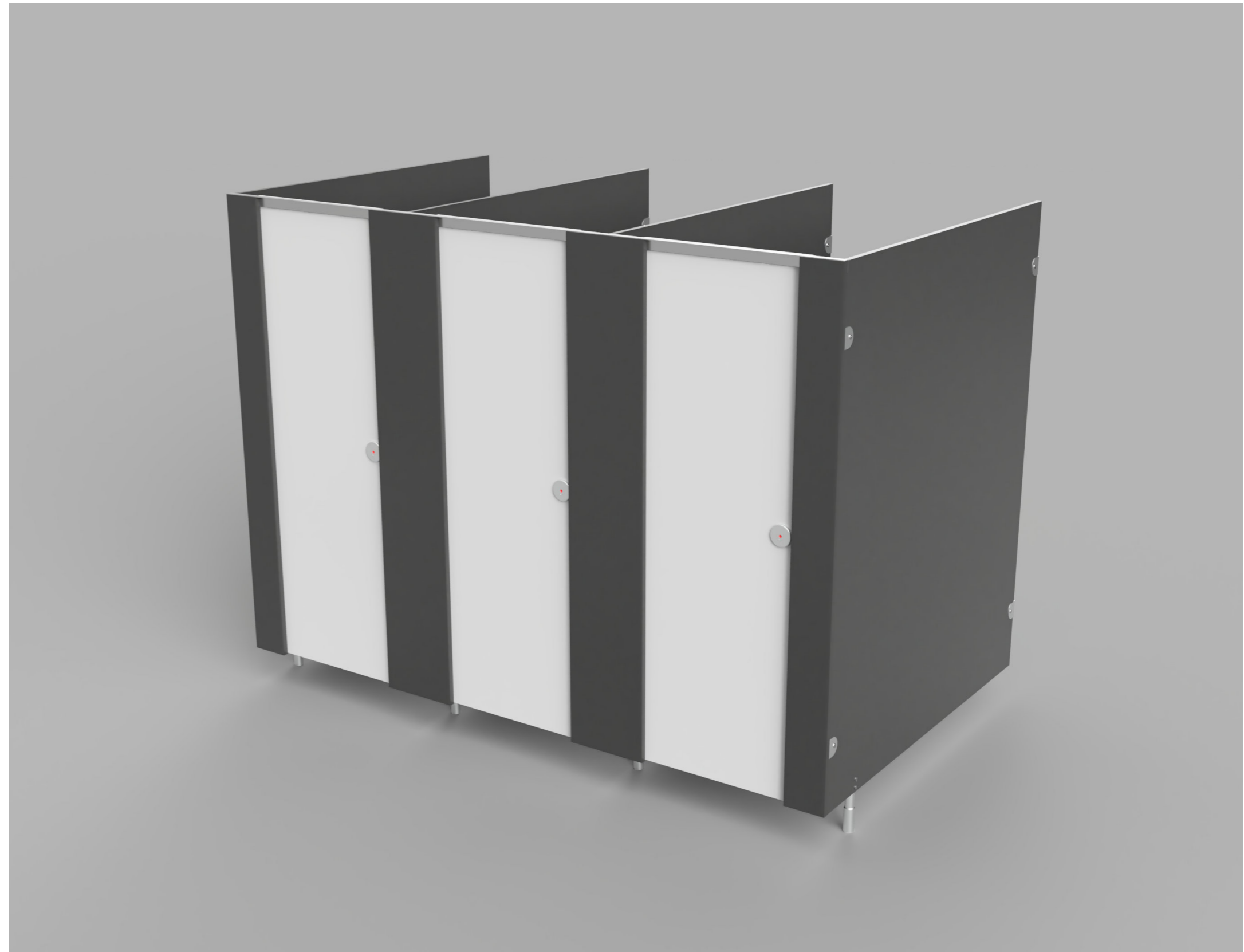
Aluminium rise & fall pivot hinge, coat hook, DDA compliant indicator bolt with high visibility red and white circular face plate, integral door buffer.
Colour: Satin Anodised Aluminium
Note: Outward opening doors supplied with outward opening keep.

" Accessories:

Coat hook

" Optional Extras:

SAA Fittings can be powder colour coated at an additional cost.
D shaped pull handle available at additional cost.



Head rail



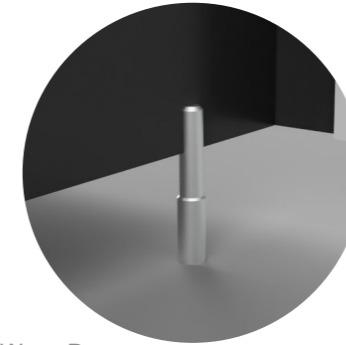
Door Bolt



Bridge Doors



Sprint Doors



Wave Doors