

volcae:



inscape: CUBICLES & WASHROOMS
“Building Confidence”





applications:

Working in close harmony with the designer, Volcae represents a unique system which will be equally at home in the most prestigious of buildings as it is in leisure and commercial facilities.

manufacture:

The partitions and doors can be manufactured from either 12mm Solid Grade Laminate (XL), or 20mm High-Pressure Laminate panels (Plus), which utilise a moisture resistant core. The fascias comprise of a strong, curved elliptical aluminium profile to produce a striking visual effect.

dimensions:

These dimensions are typical and for guidance only as our cubicle systems are designed to suit the clients specific requirements.

Typical cubicle height is 1950mm including the adjustable leg.
Typical ground clearance is 150mm (adjustable from 125-175mm).

	Thickness	Height	Width
Partitions - XL	12mm	1800mm	1500mm
- Plus	20mm	1800mm	1500mm
Doors - XL	12mm	1790mm	600-900mm
- Plus	20mm	1790mm	600-900mm
Pilasters	40mm	1800mm	100 & 200mm

ironmongery:

Designed to complement the fascia's, the unique style of the furniture allows inward and outward opening cubicles to be placed side by side without affecting the external appearance.

The indicator bolts are easily operated by people of all ages and abilities whilst an optional anti-vandal security kit is available if required. The furniture is available in a range of colours and finishes to complement the multitude of laminate patterns available to the discerning customer.



inscape: CUBICLES & WASHROOMS
"Building Confidence"

Volcae Cubicle System from Inscape Interiors Limited

Manufacturer:	Inscape Interiors Limited, Unit 1, Lower Healey Business Park, Froom Street, Chorley, LANCS PR6 9AR. Tel: 01257 249090
Reference:	Volcae XL Volcae Plus
Standard Height:	1950 mm overall height with 150mm floor clearance as standard
Standard Depth:	1500mm to back wall or Duct System
Board / Panel Type:	Volcae XL: Solid Grade Laminate Volcae Plus: High Pressure Laminate
Thickness:	Volcae XL: 12mm Volcae Plus: 20mm
Moisture Content on Delivery:	N/A
Colour / Finish:	From Inscape's standard colour range
Edge Treatment:	Volcae XL: Radiused and Polished Volcae Plus: 2mm impact resistant ABS
Fixtures & Fittings:	Polyester Powder Coated Elliptical Aluminium Pilasters and fittings

manufacture:

Volcae XL is manufactured from 12mm Solid Grade Laminate with radiused and polished edges, whilst Volcae Plus utilises a moisture resistant core material faced with High Pressure Laminate. All Volcae cubicles use robust but stylish Polyester Powder coated Elliptical Aluminium pilasters and fittings to provide an attractive but hard wearing systems suitable for high-end, high-traffic or exclusive environments.

fittings:

All required Cubicle hardware is supplied as standard.

In order to comply with Building Regulations this system is accessible externally in the event of an emergency.

ancillary products:

Prices for a wide range of products such as Soap dispensers, paper towel holders etc. are available on request.

options:

Increased Height:

System overall height can be increased up to ceiling height (subject to the maximum length of available pilaster extrusion) and floor clearance can be reduced on request.

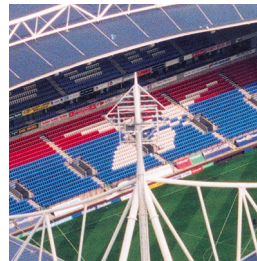
Increased Depth:

Careful selection of colours allows for the Cubicle Depth to be increased as required.

Fittings:

Fittings are supplied in a Polyester Powder Coated finish to match the pilasters. A range of PPC colours are available and RAL references can be matched.

inscape: CUBICLES & WASHROOMS
"Building Confidence"



If you would like to know more about our range of associated products
please do not hesitate to contact us.

Email: projects@inscapepeople.co.uk

Visit: www.inscapepeople.co.uk

Tel: 01257 249090

inscape: CUBICLES & WASHROOMS
“Building Confidence”

